

4

3

2

1

NOTES: UNLESS OTHERWISE SPECIFIED

1. A (REF) DIMENSION IS FOR INFORMATION PURPOSES ONLY AND NO TOLERANCE IS IMPLIED.

REVISION HISTORY			
REV	DESCRIPTION	DATE	APPROVED
I	OUTLINE DIMENSIONAL DRAWING RELEASED	09DEC16	IP

Technical drawing of a microphone assembly. The drawing shows a cylindrical microphone body with a tapered rod attached. Dimensions are provided in inches and millimeters: (50.78 [1289.8]) for the total length, (1.77 [44.9]) for the distance from the top of the microphone body to the start of the tapered rod, and (Ø1.43 [36.4]) for the diameter of the microphone body. Labels include: 1 1/8-18 UNEF - 2B (thread on the microphone body), 10-32 UNF - 2B (thread on the tapered rod), and 49" TAPERED ROD, STAINLESS STEEL (the tapered rod itself). The microphone body has the PCTEL logo on it.

Cross-sectional view of the microphone assembly. Labels indicate the following components: 3/32 ALLEN WRENCH (used for adjustment), 2X 10-32 SET SCREW (securing the assembly), and NEOPRENE WASHER (providing a seal). The drawing shows the internal structure of the microphone body and the tapered rod.

SUPPLIER PRINT ACCEPTANCE: <input type="checkbox"/> Accept drawing/specification: No changes needed: <input type="checkbox"/> This part is RoHS compliant <input type="checkbox"/> This part is REACH compliant <input type="checkbox"/> Accept drawing/specification. Notes/Mark-ups added <input type="checkbox"/> Cannot accept drawing/spec. Notes/Mark-ups added Supplier Projected Outgoing Quality: SIGMA LEVEL : _____ or PPM: _____ Signature _____ Date: _____		UNLESS OTHERWISE SPECIFIED DUAL DIMENSIONING XX.Xin [XX.Xmm] FOR TOLERANCES NOT SPECIFIED USE: X.X in ± .1 in, X.XX in ± .01 in, X.XXX in ± .005 in [X mm ± 3 mm], [X.X mm ± .3 mm], [X.XX mm ± .13 mm] ANGULAR ± 1°, FRACTIONAL ± 1/64		DRAWN IP DATE 12/9/2016 CHECKED DATE MATERIAL: SEE COMP. PRINTS FINISH: SEE COMP. PRINTS		PCTEL, INC. 471 BRIGHTON DRIVE BLOOMINGDALE, IL 60108 PH. 630-372-6800 FAX. 630-372-8077	
		THIRD ANGLE PROJECTION 		PCTEL PROPRIETARY DATA THE INFORMATION AND/OR DRAWINGS CONTAINED IN THIS DOCUMENT IS CONFIDENTIAL AND PROPRIETARY TO PCTEL, INC. AND MAY NOT BE USED, REPRODUCED, IN WHOLE OR IN PART, OR MODIFIED IN ANY WAY WITHOUT THE EXPRESS WRITTEN PERMISSION OF AN AUTHORIZED REPRESENTATIVE OF PCTEL, INC.		DESCRIPTION 144-174,3DB,CHR DRAWING NO. ODD_MHB5800 SIZE B SCALE 1:1 SHEET 1 OF 1	

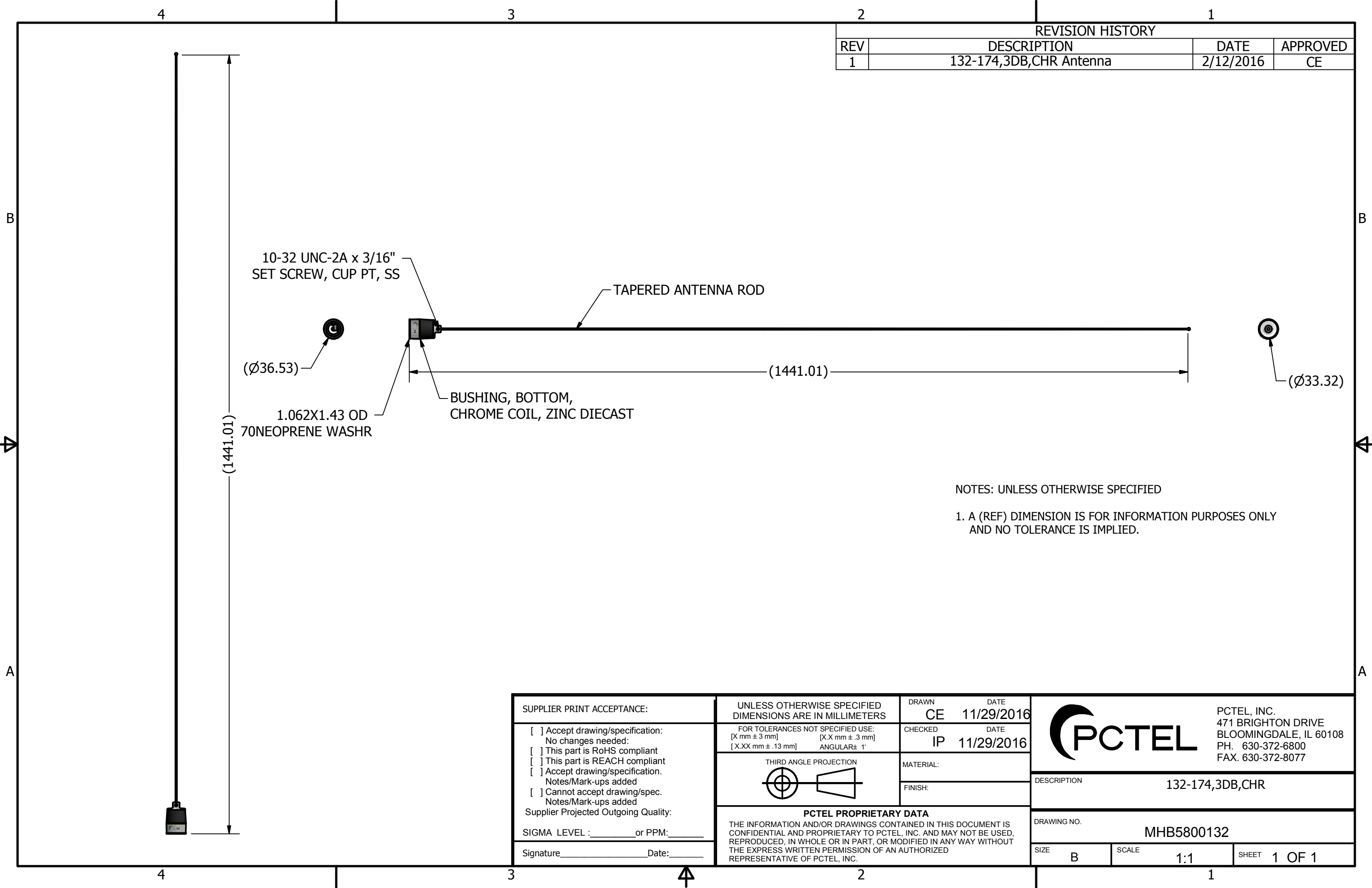
4

3

2

1

REVISION HISTORY			
REV	DESCRIPTION	DATE	APPROVED
1	132-174,3DB,CHR Antenna	2/12/2016	CE



10-32 UNC-2A x 3/16"
SET SCREW, CUP PT, SS

TAPERED ANTENNA ROD

(Ø36.53)

(1441.01)

(Ø33.32)


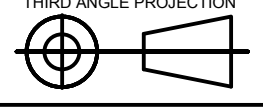
(1441.01)

1.062X1.43 OD
70NEOPRENE WASHR

BUSHING, BOTTOM,
CHROME COIL, ZINC DIECAST

NOTES: UNLESS OTHERWISE SPECIFIED

1. A (REF) DIMENSION IS FOR INFORMATION PURPOSES ONLY
AND NO TOLERANCE IS IMPLIED.

SUPPLIER PRINT ACCEPTANCE: <input type="checkbox"/> Accept drawing/specification: No changes needed: <input type="checkbox"/> This part is RoHS compliant <input type="checkbox"/> This part is REACH compliant <input type="checkbox"/> Accept drawing/specification. Notes/Mark-ups added <input type="checkbox"/> Cannot accept drawing/spec. Notes/Mark-ups added Supplier Projected Outgoing Quality: SIGMA LEVEL : _____ or PPM: _____ Signature _____ Date: _____	UNLESS OTHERWISE SPECIFIED DIMENSIONS ARE IN MILLIMETERS FOR TOLERANCES NOT SPECIFIED USE: [X mm ± 3 mm] [X.X mm ± .3 mm] [X.XX mm ± .13 mm] ANGULAR± 1°	DRAWN DATE CE 11/29/2016 CHECKED DATE IP 11/29/2016	 PCTEL, INC. 471 BRIGHTON DRIVE BLOOMINGDALE, IL 60108 PH. 630-372-6800 FAX. 630-372-8077	
	THIRD ANGLE PROJECTION 	MATERIAL: FINISH:		DESCRIPTION 132-174,3DB,CHR
PCTEL PROPRIETARY DATA THE INFORMATION AND/OR DRAWINGS CONTAINED IN THIS DOCUMENT IS CONFIDENTIAL AND PROPRIETARY TO PCTEL, INC. AND MAY NOT BE USED, REPRODUCED, IN WHOLE OR IN PART, OR MODIFIED IN ANY WAY WITHOUT THE EXPRESS WRITTEN PERMISSION OF AN AUTHORIZED REPRESENTATIVE OF PCTEL, INC.		DRAWING NO. MHB5800132		
		SIZE B	SCALE 1:1	SHEET 1 OF 1